

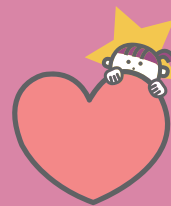


# KANICITY

sightseeing



## FEATURES OF KANI CITY



This pamphlet was created by the members of Kani City Foreign Citizens Committee.

[What is Kani City Foreign Citizens Committee]

This conference was established in 2021 to provide more information, incorporate opinions and recommendations from the perspective of foreign residents.

November 2022 Gifu Prefecture Kani City





# GIFU WORLD ROSE GARDEN

A place where you can take beautiful pictures

## SPRING



## AUTUMN



Huge playground famous to kids!

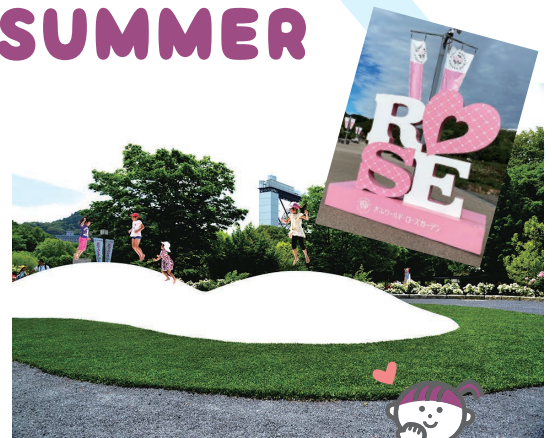


### Comments

Access to Gifu World Rose Garden ▶  
I always take a picture in front of the monument ♪



## SUMMER



A pool to be enjoyed by kids in summer!

◀ I recommend the observation deck!



#sunflowerfield  
#maze

## WINTER

Kitchen Car Events ♪



#trainPOPPO  
#forAdultsandKids  
#goaroundthegarden

### Comments

Annual passport is also available!

## Free entrance day soon!



GIFU WORLD ROSE GARDEN

For more info







# NITTOKU SPARK TEC WKS PARK

PARK • Kiso River Watashiba Pathway

SparkTec Works Park



◀ Access to Kisogawa  
Watashiba Pathway



Access to Nittoku  
Spark Tec WKS Park ▶

## ▼ Kiso River Watashiba Pathway (promenade of Princess Kaguya)



### Comments

I want to take nice pictures wearing a yukata!

I want to cycle around the park and in the pathway.

I want to take lots of pictures!

It is a nice place with  
huge playgrounds and  
wide play space.



Recommended  
for families with  
kids!



**P** Parking space available







# Mt. Hatobuki

Access to Mt. Hatobuki ▶



## ● Mountain View

#Koyoseason

#Enjoywithoutclimbing

### Comments

- There is a feeling of accomplishment in climbing!
- The view at the top is beautiful! ♪
- I climbed together with my friends for health purpose!



## ● Way up the mountain



## ● Commemorative Photo

### Comments

There are rest spaces to enjoy relaxed climbing!  
I like climbing in autumn!

Check the HP for more info. ▼



Share your beautiful  
photos through  
「#かにスタ」



#fordates  
#climbingwithfam!



## SNS



Line



facebook



twitter



instagram

