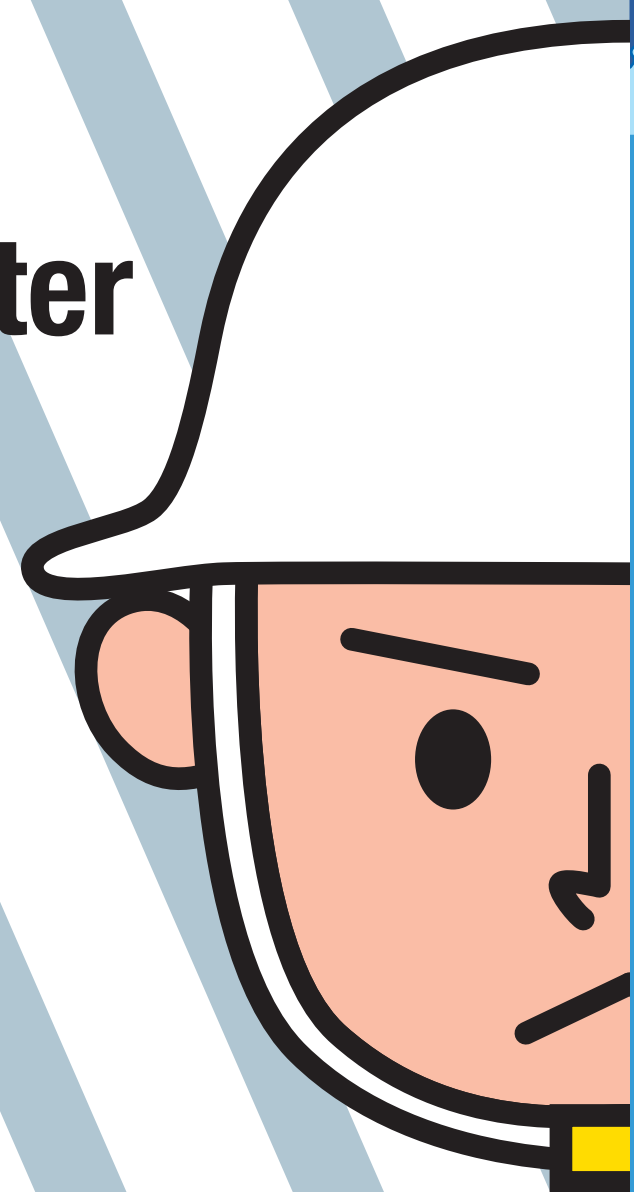


Kani City, West Part Flood and Landslide Disaster Hazard Map



To protect your life from floods



Tips for evacuation from floods

Go to a safe place at an early stage before flooding

It is very dangerous to evacuate during a flood. Make sure that you can use information such as that about evacuation before flooding, and take the opportunity to evacuate.

If flooding begins

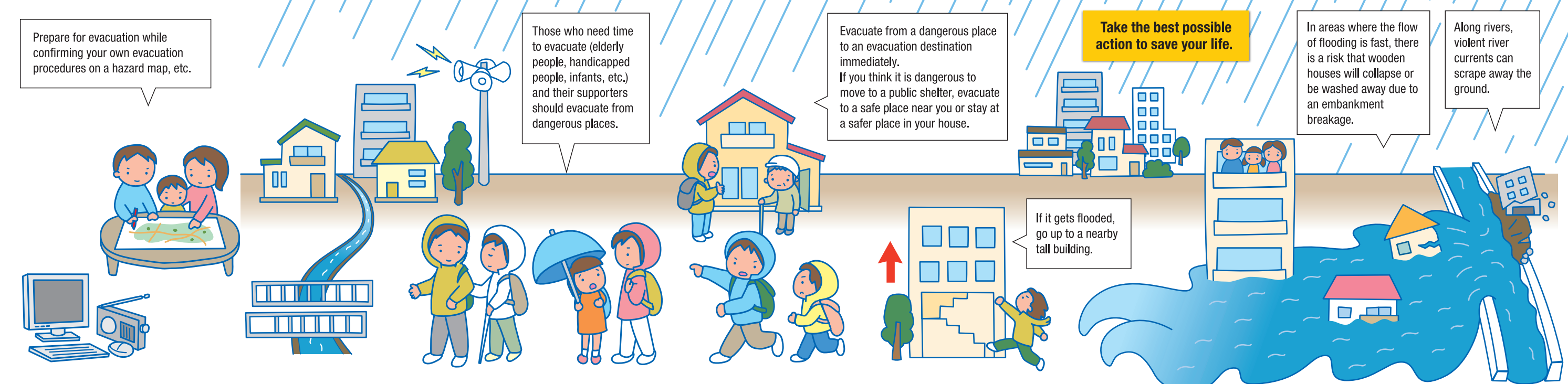
Do not evacuate after flooding, but protect yourself in a tall building nearby or in a high place at home.

Be aware of the following when evacuating from the flood:

If the water is muddy, it will be difficult to see your feet. If the lid is removed, there is a risk of falling in a manhole or a road gutter.

Avoid roads that are lower than the surrounding area and easily flooded, such as underpasses.

In recent years, local heavy rains and torrential rains have caused great damage in various places. With rivers, there is a concern that accidents may occur, even downstream where no heavy rains are falling, due to the sudden increase in water caused by heavy rain upstream. For outdoor activities, you must take care not to approach flooded rivers and waterways.



Pay attention to the meteorological information!

If there is danger due to heavy rain, the Japan Meteorological Agency will announce warnings and advisories for disaster prevention.

State of emergency: When much heavier rain continues. Heavy rain emergency warning. When heavy rain continues. Heavy rain / flood warning. When the rain gets stronger. Heavy rain / flood advisory.

NHK data broadcasting: Press the button on your remote control. Japan Meteorological Agency: http://www.jma.go.jp. River disaster management information released by Gifu Prefectural government: http://www.kasen.pref.gifu.lg.jp

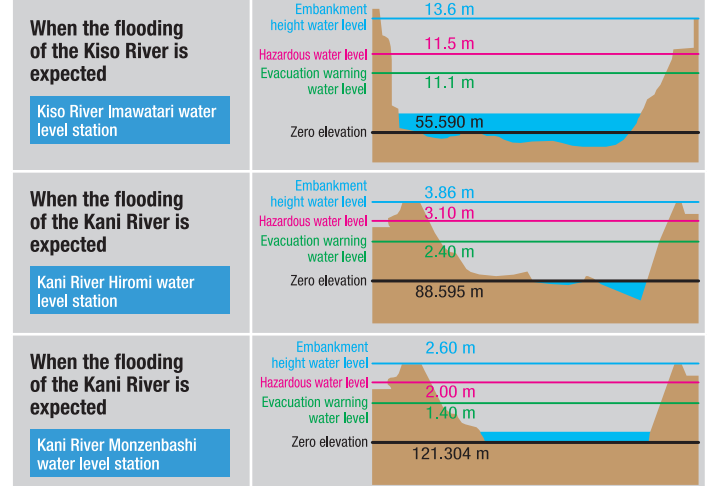
Pay attention to water level information!

The danger of flooding is imminent.

If rain continues to fall like this, the river will overflow.

The water level is higher than usual.

River water level information

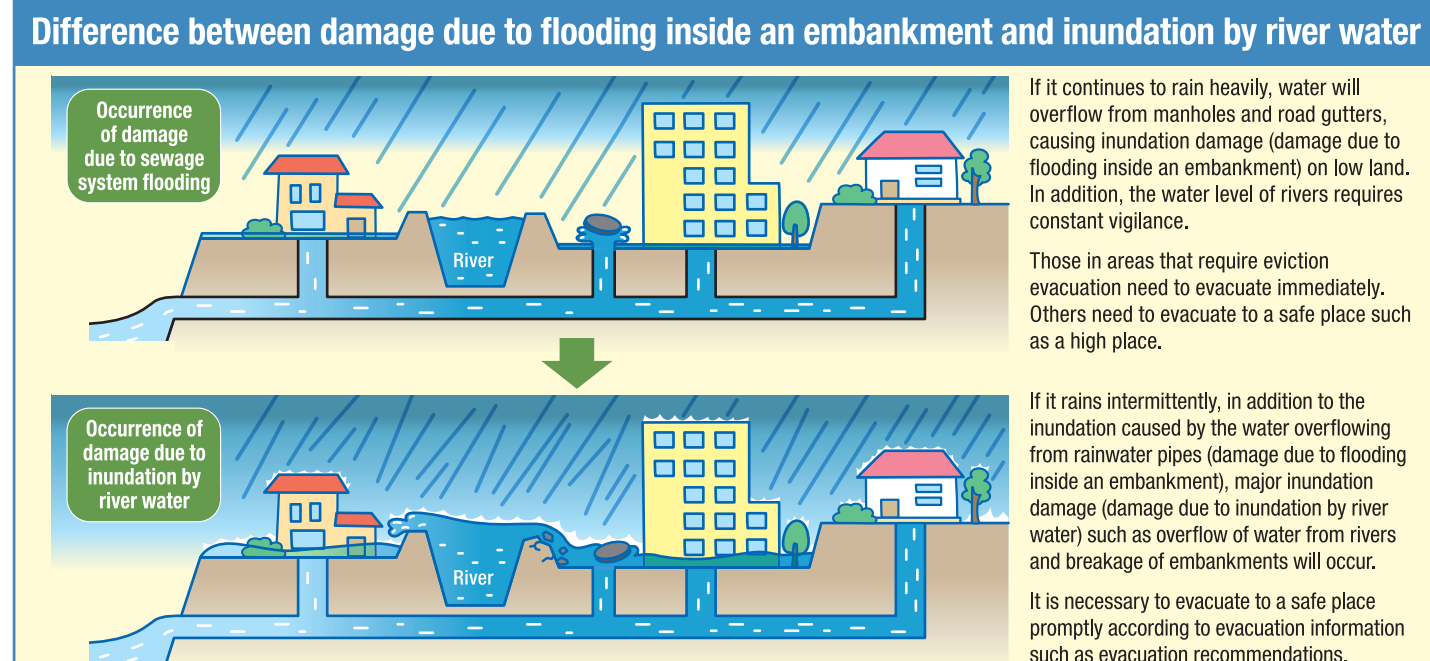


Our family's evacuation sites and shelters

ID	Facility name	Location	Phone
1	Inawatari District Center	Note L2	1321-4 Inawatari 25-2602
2	Welfare Center (Welfare shelter)	Note L2	682-1 Inawatari 62-1555
3	Sonan Junior High School	Note L2	112 Inawatari 62-1010
4	Inawatari Kita Elementary School	Note L2	1680 Inawatari 63-1500
5	Shimodo District Center	Note L2	2-14 Kawakita 63-4339
6	Inawatari Minami Elementary School	Note L2	1673 Shimodo 63-4751
7	Dota District Center	Note L2	2352-2 Dota 25-2217
8	Dota Elementary School	Note L2	4226-1 Dota 25-2652
9	Katabira District Center	Note 2	1011 Higashikatabira 65-2007
10	Katabira Elementary School	Note 2	1047 Higashikatabira 65-4902
11	Mitsukatabira Elementary School	Note 2	2221 Higashikatabira 65-4181
12	Nishi Kani Junior High School	Note 2	1-71 Wakaba 65-6835
13	Koryo Junior High School	Note 2	583 Higashikatabira 65-7991
14	Gifu University of Medical Science	Note 2	4-3-3 Nijigaoka 65-6555
15	Harasuta District Center	Note L2	407 Yato 65-2006
16	B & G Marine Center	Note L2	987-8 Sakado 62-8603
17	Aged Welfare Center Karigawaen (Welfare shelter)	Note L2	765 Sakado 61-0248
18	Harasuta Elementary School	Note L2	642-1 Shio 65-2963
19	Kani High School	Note L2	987-2 Sakado 62-1000
20	Waiku Waiku Experience Center	Note 2	1071-4 Shuga 65-1515
21	Himeji District Center	Note 2	1530 Shimogiri 62-0104
22	L Port Kani	Note 2	1-57 Himegaka 61-0111
23	Hiratsuki District Center	Note 2	2547-4 Nino 62-0067
24	Aged Welfare Center Fukujun (Welfare shelter)	Note 2	347-2 Omori 63-3333
25	Asahi Elementary School	Note 2	2078-3 Omori 62-0302
26	Sakuragaoka District Center	Note 2	6-1-1 Saburagaoka 64-0051
27	Sakuragaoka Elementary School	Note 2	5-5-2 Sakuragaoka 64-0700
28	Higashi Kani Junior High School	Note 2	4-71 Saburagaoka 64-2700
29	Tokyo University Kani Senior High School	Note 2	1-1 Matsuragaoka 64-3211

Contact information of our family members

Name	Company / school contact information	Mobile phone	Email address	Blood type



Designated evacuation shelter

District name	ID	Facility name	Location	Phone
Inawatari	1	Inawatari District Center	Note L2	1321-4 Inawatari 25-2602
	2	Welfare Center (Welfare shelter)	Note L2	682-1 Inawatari 62-1555
	3	Sonan Junior High School	Note L2	112 Inawatari 62-1010
	4	Inawatari Kita Elementary School	Note L2	1680 Inawatari 63-1500
Kawaji	5	Kawaji District Center	Note L2	2-14 Kawakita 63-4339
	6	Shimodo District Center	Note L2	1673 Shimodo 63-4751
	7	Inawatari Minami Elementary School	Note L2	1673 Shimodo 63-4751
Shimodo	8	Dota District Center	Note L2	2352-2 Dota 25-2217
	9	Dota Elementary School	Note L2	4226-1 Dota 25-2652
Dota	10	Katabira District Center	Note 2	1011 Higashikatabira 65-2007
	11	Katabira Elementary School	Note 2	1047 Higashikatabira 65-4902
	12	Mitsukatabira Elementary School	Note 2	2221 Higashikatabira 65-4181
Katabira	13	Nishi Kani Junior High School	Note 2	1-71 Wakaba 65-6835
	14	Koryo Junior High School	Note 2	583 Higashikatabira 65-7991
	15	Gifu University of Medical Science	Note 2	4-3-3 Nijigaoka 65-6555
Harasuta	16	Harasuta District Center	Note L2	407 Yato 65-2006
	17	B & G Marine Center	Note L2	987-8 Sakado 62-8603
	18	Aged Welfare Center Karigawaen (Welfare shelter)	Note L2	765 Sakado 61-0248
	19	Harasuta Elementary School	Note L2	642-1 Shio 65-2963
	20	Kani High School	Note L2	987-2 Sakado 62-1000
Himeji	21	Waiku Waiku Experience Center	Note 2	1071-4 Shuga 65-1515
	22	Himeji District Center	Note 2	1530 Shimogiri 62-0104
Hiratsuki	23	L Port Kani	Note 2	1-57 Himegaka 61-0111
	24	Hiratsuki District Center	Note 2	2547-4 Nino 62-0067
	25	Aged Welfare Center Fukujun (Welfare shelter)	Note 2	347-2 Omori 63-3333
Saburagaoka	26	Asahi Elementary School	Note 2	2078-3 Omori 62-0302
	27	Sakuragaoka District Center	Note 2	6-1-1 Saburagaoka 64-0051
	28	Sakuragaoka Elementary School	Note 2	5-5-2 Sakuragaoka 64-0700
	29	Higashi Kani Junior High School	Note 2	4-71 Saburagaoka 64-2700
	30	Tokyo University Kani Senior High School	Note 2	1-1 Matsuragaoka 64-3211

Note 1: As it is located within an expected inundation area, the safety of the facility should be fully confirmed for evacuation when flood damage is predicted.
Note 2: As it is located within an expected inundation area due to the largest possible rainfall, the safety of the facility should be fully confirmed for evacuation when flood damage is predicted.
Note 3: As it is located in a landslide disaster warning area, the safety of the facility should be fully confirmed for evacuation when a landslide disaster is predicted.
Note 4: As the area around the facility is within a landslide disaster warning area, the safety of the evacuation route should be fully confirmed for evacuation when a landslide disaster is predicted.

Evacuation Area

Facility name	Location
Fureai Park / Midori-no-Oka	1269-38 Hazaki
Roadside Station Canite	416-1 Kakida
Kani Sports Park	987-4 Sakado

To protect your life from landslide disasters



Tips for evacuation from landslide disasters

Evacuate early, paying attention to rain and warning signs

Landslide disasters are a phenomenon in which it is extremely difficult to issue evacuation information. Take the opportunity to evacuate voluntarily even if there is no information.

When it is dangerous to go out due to heavy rain

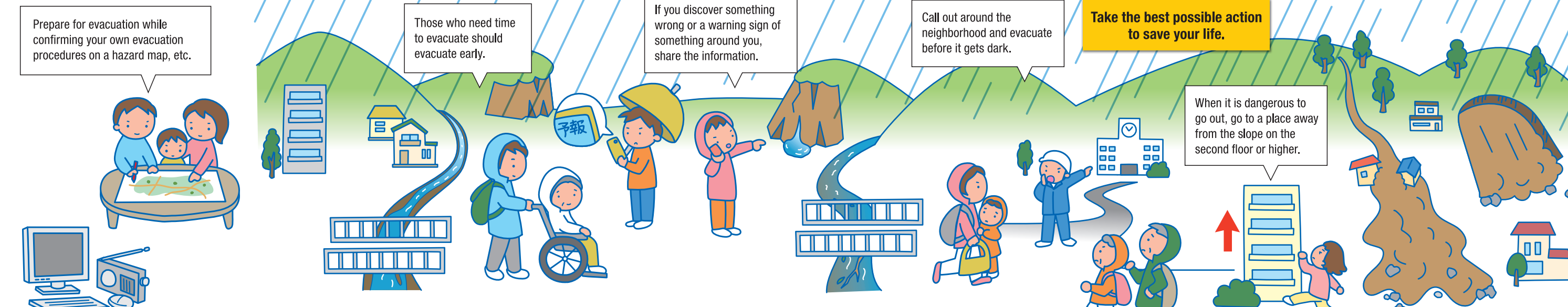
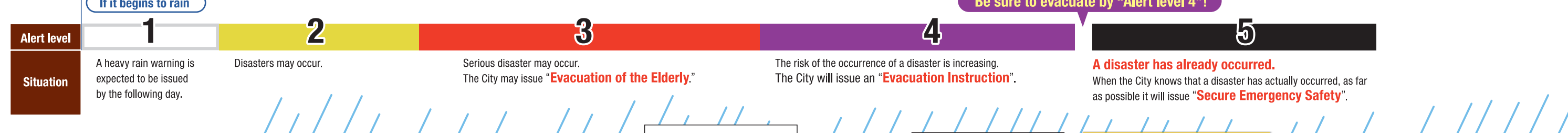
If you think that it is dangerous to go to an evacuation shelter, move to a safe place such as the second floor or higher of a sturdy building, which is away from slopes, and protect yourself without forcing yourself to evacuate to a shelter.

Be aware of the following when evacuating from a landslide disaster:

If it is expected to continue raining during the night, evacuate before it gets dark.

Choose a road away from slopes and flooded rivers.

If you feel any danger around you, run into a tall and sturdy building.



Pay attention to landslide disaster warning information!

Landslide disaster warning information. When the risk of landslide disasters increases, Gifu Prefecture and the Japan Meteorological Agency will announce the precipitation amount in the area.

NHK data broadcasting: Press the button on your remote control. Gifu landslide disaster information portal: https://alert.sabo.pref.gifu.lg.jp/web/pub

Be careful when raining!

Be careful when the rainfall is 20 mm or more per hour, or 100 mm or more after the start of rainfall.

Hourly precipitation 20 mm: Heavy rain that makes it difficult to see in front of you even if you use the wipers on your car.

Continuous precipitation 100 mm: Even if it just rains lightly, when it continues to rain for a long time the risk of landslide disasters increases.

Advance phenomena of debris flow

The mountain is rumbling or shaking. It's raining but the river is running low. The river is muddy and carrying trees with it.

Landslide phenomena

Pebbles fall from the cliff. Spring water from a cliff increases or becomes muddy. Spring water stops and there are cracks on the slope.

What is a landslide disaster warning area?

Landslide disaster warning area (Yellow zone): An area where it is recognized that there is a risk of damage to lives in the event of a landslide disaster.

Landslide disaster special warning area (Red Zone): Areas in the landslide disaster warning area that may cause damage to buildings and cause significant harm to residents.

Prepare things to bring in an emergency and goods to store.

According to the number of your family members, prepare the minimum necessary emergency items in a backpack so that you can take them with you at any time. Also, in order to support yourselves after a disaster, prepare water, food, daily necessities, and other stockpiles for seven days (or at least three days) for each of your family members.

Things to bring in an emergency: Portable radio, Flashlight, Extra batteries, Water bottle, Paper cup, Paper plate, Disposable chopsticks, Can opener, Utility knife, Plastic bottle.

Goods to store: Newspapers, Toilet articles, Bucket, Paper tableware, Portable gas stove (and fuel), Hooded raincoat, Lighter, Soap, Sewing set, Sanitary items, Gummed cloth tape, Towel, Work gloves, Candles, Ground sheet, String, Shoes / slippers, Plastic wrap / aluminum foil, Portable toilet.

Emergency food: Drinking water, Canned food, Cooked packaged rice, Crackers/hard biscuits, Pre-packaged food.

Valuables: Cash (including small change), Bank passbook, Seal, House / car keys, Various cards, Mobile phone, Driver's license / copy of health insurance card.

Others (as needed): Extra clothes, Towels, Spare glasses, Plastic wrap, Wet wipes, Plastic bags, Rain gear, Prescription record, Mother and child health handbook, Infant formula, Baby bottle, Disposable diapers, Sanitary items, Work gloves, Face mask, Pocket warmers, Writing materials, Address book with contact information, Whistle, Spare battery for mobile phones, Helmet / disaster prevention hood.

Consider your clothes when evacuating!

Safe and easy-to-move clothes: Helmet (disaster prevention hood), Work gloves and long gloves, Backpack, Wear long-sleeved shirts and long pants, Comfortable shoes, Raincoats and warm clothing against rain and wind.

Arrangements and preparations for one week: Utilize ingredients from refrigerators and freezers. Store ingredients in your refrigerator and store rice, bread, vegetables, frozen foods, etc. in your freezer. Rolling stock method: Rather than stockpiling specially, purchase a little more of what you would usually eat or use, and stockpile (rolling stock) on a daily basis while replenishing only what you eat or use. By doing so, you be prepared without difficulty and without waste due to expiration dates.

How to get information

Emergency email in the event of a disaster "Instant Email Kani". Emergency information transmission system utilizing FMra. Register for the Kani City mail distribution service "Instant Email Kani". Check on TV: On TVs that support data broadcasting, you can check rain and river information by pressing the button on your remote control. Check on the Internet: Kani City Hall's website, Kani City Hall's Facebook account, Kani City Hall's Twitter account, Kani City Hall's LINE account. Disaster Emergency Message Dial 171 (NTT), Disaster Emergency Message Board (web171) (NTT).

You are the one who can decide to evacuate or take action.

Protect lives: Know about local disasters. Use hazard maps to identify dangerous areas such as floods and landslides. What you can do now to save lives: Check evacuation destination, Check how to obtain information.

Help each other: Get to know everyone in your area. Talk to neighbors on a regular basis, Confirm those who need evacuation assistance, Consultation on evacuation methods. Call out and evacuate together. Call out when evacuating.