

Kani City, East Part Flood and Landslide Disaster Hazard Map



To protect your life from floods



Tips for evacuation from floods

Go to a safe place at an early stage before flooding

It is very dangerous to evacuate during a flood. Make sure that you can use information such as that about evacuation before flooding, and take the opportunity to evacuate.

If flooding begins

Do not evacuate after flooding, but protect yourself in a tall building nearby or in a high place at home.

Be aware of the following when evacuating from the flood:

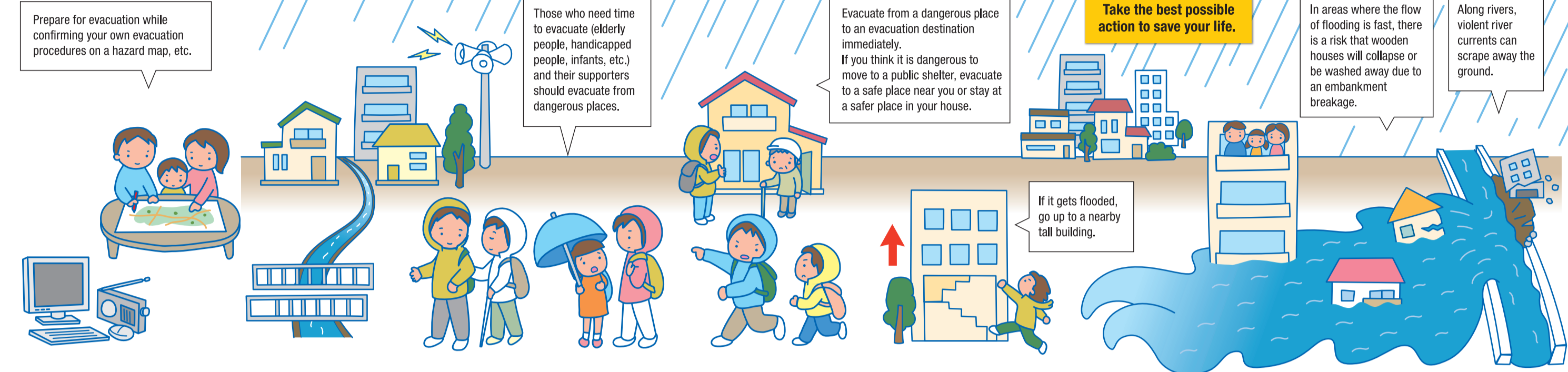
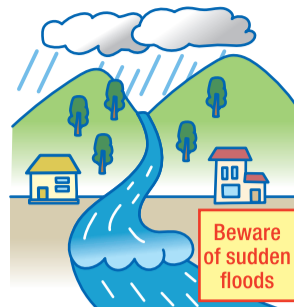
If the water is muddy, it will be difficult to see your feet. If the lid is removed, there is a risk of falling in a manhole or a road gutter.



Avoid roads that are lower than the surrounding area and easily flooded, such as underpasses.



In recent years, local heavy rains and torrential rains have caused great damage in various places. With rivers, there is a concern that accidents may occur, even downstream where no heavy rains are falling, due to the sudden increase in water caused by heavy rain upstream. For outdoor activities, you must take care not to approach flooded rivers and waterways.



Our family's evacuation sites and shelters

Contact information of our family members

Name	Company / school contact information	Mobile phone	Email address	Blood type

Pay attention to the meteorological information!

If there is danger due to heavy rain, the Japan Meteorological Agency will announce warnings and advisories for disaster prevention.

State of emergency: When much heavier rain continues.

Heavy rain emergency warning: When heavy rain continues.

Heavy rain / flood warning: When the rain gets stronger.

Heavy rain / flood advisory: When the rain gets stronger.

NHK data broadcasting: Press the button on your remote control.

Japan Meteorological Agency: <http://www.jma.go.jp>

River disaster management information released by Gifu Prefectural government: <http://www.kasen.pref.gifu.jp>

Pay attention to water level information!

The danger of flooding is imminent.

The City will decide whether to issue an **Evacuation Instruction**. Residents, please **begin evacuation**.

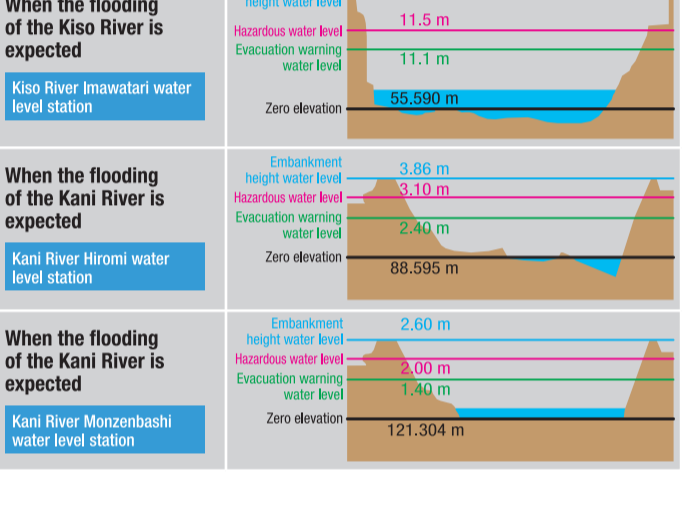
If rain continues to fall like this, the river will overflow.

The City will decide whether to issue **Start of Evacuation of the Elderly, etc.** Those who need time to evacuate and their supporters should **begin evacuation**.

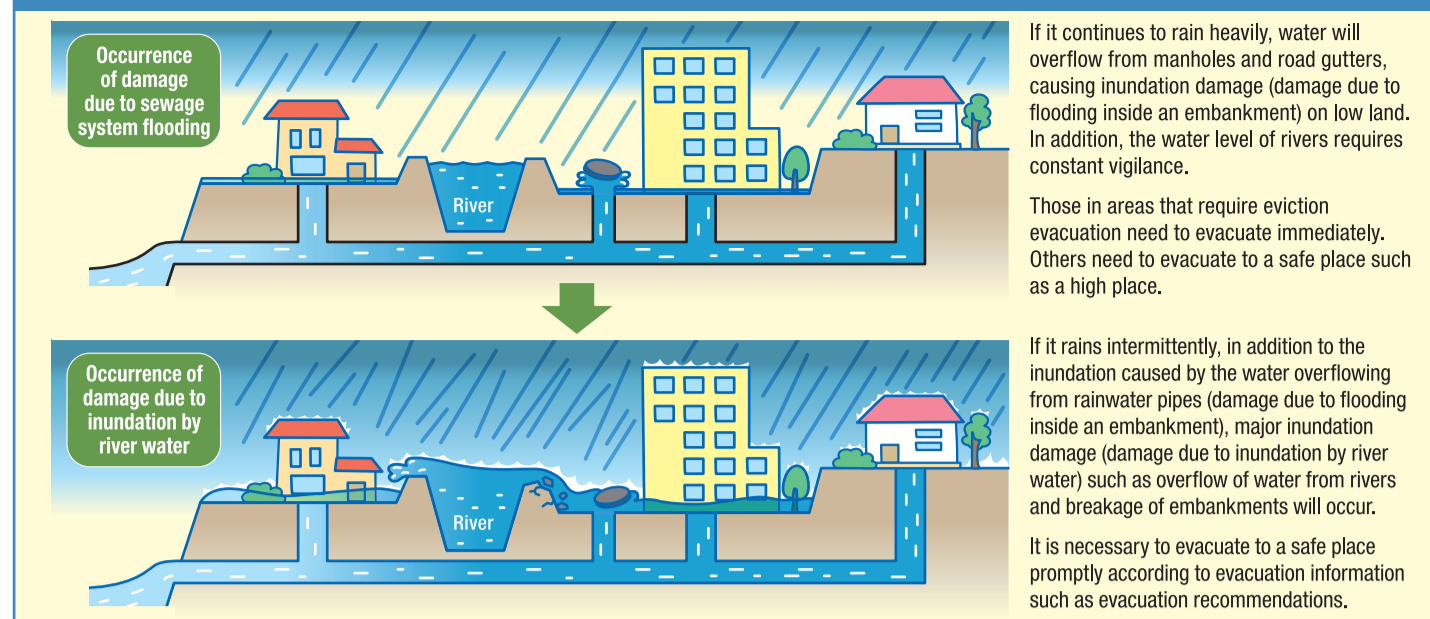
The water level is higher than usual.

Flood control team standby stage

River water level information



Difference between damage due to flooding inside an embankment and inundation by river water



Designated evacuation shelter

District name	ID	Facility name	Evacuation site (Floor / Location)	Location	Phone	District name	ID	Facility name	Evacuation site (Floor / Location)	Location	Phone	
Inawashiro	1	Inawashiro District Center	Note L2	1521-4 Inawashiro	25-2602	Kukuri	1	Kukuri District Center	Note L1 Note 1	1644-1 Kukuri	64-1120	
	2	Welfare Center (Welfare shelter)	Note L2	682-1 Inawashiro	62-1555		2	Tsuzumi Elementary School	Note L2	1945 Kukuri	64-1128	
	3	Sonan Junior High School	Note L2	112 Inawashiro	62-1010		3	Hirumi District Center	Note L1	7-77 Hirumi	62-2101	
Kawanishi	4	Inawashiro Kita Elementary School	Note L2	1680 Inawashiro	63-1500	Hirumi	4	Sogakikan	Note L1	1-5 Hirumi	62-1111	
	5	Kawanishi District Center	Note L2	2-14 Kawakita	63-4339		5	Chubu Junior High School	Note L2	1086 Hirumi	62-1161	
	6	Shimodoko District Center	Note L2	1673 Shimodoko	63-4751		6	Hirumi Elementary School	Note 2	71-1 Hirumi	62-1551	
Shimodoko	7	Inawashiro Minami Elementary School	Note L2	3433-7 Shimodoko	62-1366	Hirumi Higashi	7	Hirumi Higashi District Center	Note L2 Note 2	1736 Seta	62-4063	
	8	Dota District Center	Note L2	2352-2 Dota	25-2217		8	Nakaado District Center	Note L1	1896-1 Nakaado	62-8722	
	9	Dota Elementary School	Note L2	4226-1 Dota	25-2652		9	Kani Technical High School	Note L2	2358-1 Nakaado	62-1185	
Dota	10	Katabira District Center	Note 2	1011 Higashikatabira	65-2007	Nakaado	10	Kanayama District Center	Note L2 Note 1	701-1 Kanayama	59-2116	
	11	Katabira Elementary School	Note 2	1047 Higashikatabira	65-4902		11	Kanayama Elementary School	Note L2	1444-1 Kanayama	59-2111	
	12	Mitsukatabira Elementary School	Note 2	2231 Higashikatabira	65-4181		12	Kanayama Nursery School	Note L2 Note 1	462-2 Kanayama	59-2202	
Katabira	13	Nishi Kani Junior High School	Note L2	7-1 Wakabada	65-6635	Kanayama	13	Agel Welfare Center Yasuragkan (Welfare shelter)	Note L2	1011-1 Kanayama	59-2223	
	14	Koryo Junior High School	Note 2	583 Higashikatabira	65-7991		14	Mitsunime Elementary School	Note L2	1237-1 Oyocho	057-27-6078	
	15	Gifu University of Medical Science	Note 2	4-3-3 Niigaoka	65-6555		15	Nemoto Elementary School	Note L2	4-6-5 Takanocho	057-27-4646	
Harusato	16	Harusato District Center	Note L2	407 Yato	65-2006	Tajimi	16	Hokuryo Junior High School	Note L2	10-6 Asahigaka	057-27-4668	
	17	B & G Marine Center	Note L2	987-4 Sakado	62-8603		17	Tajimi Toetsen	Note L2	5-411 Kabi Onacho	057-25-8997	
	18	Agel Welfare Center Kanigawaen (Welfare shelter)	Note L2	765 Sakado	61-0248		18					
Hirumaki	19	Kani Elementary School	Note L2	642-1 Shio	65-2963	Hirumaki	19					
	20	Kani High School	Note L2	987-2 Sakado	62-1000		20					
	21	Waiku Waiku Experience Center	Note 2	1071-4 Shuga	65-1515		21					
Hirumaki	22	Hirumaki District Center	Note 2	2547-4 Nino	62-0067	Hirumaki	22					
	23	Agel Welfare Center Fukujuen (Welfare shelter)	Note 2	347-2 Omori	63-3333		23					
	24	Asahi Elementary School	Note 2	2078-3 Omori	62-0302		24					
Sakuragaka	25	Sakuragaka District Center	Note L2	6-1-1 Saburagaka	64-0051	Sakuragaka	25					
	26	Sakuragaka Elementary School	Note L2	5-5-2 Sakuragaka	64-0700		26					
	27	Higashi Kani Junior High School	Note L2	4-71 Saburagaka	64-2700		27					
Sakuragaka	28	Tokyo University Kani Senior High School	Note L2	1-1 Matsuragaka	64-3211	Sakuragaka	28					
	29						29					
	30						30					

Note L1: As it is located within an expected inundation area, the safety of the facility should be fully confirmed for evacuation when flood damage is predicted.
 Note L2: As it is located within an expected inundation area due to the largest possible rainfall, the safety of the facility should be fully confirmed for evacuation when flood damage is predicted.
 Note 1: As it is located in a landslide disaster warning area, the safety of the facility should be fully confirmed for evacuation when a landslide disaster is predicted.
 Note 2: As the area around the facility is within a landslide disaster warning area, the safety of the evacuation route should be fully confirmed for evacuation when a landslide disaster is predicted.

Prepare things to bring in an emergency and goods to store.

According to the number of your family members, prepare the minimum necessary emergency items in a backpack so that you can take them with you at any time. Also, in order to support yourselves after a disaster, prepare water, food, daily necessities, and other stockpiles for seven days (or at least three days) for each of your family members.

Things to bring in an emergency (Things to bring with you when evacuating)

Goods to store (Things to prepare for several days (minimum three days, preferably seven days) until recovery)

Daily necessities

- Portable radio
- Flashlight
- Extra batteries
- Water bottle
- Paper cup
- Paper plate
- Disposable chopsticks
- Can opener
- Utility knife
- Plastic bottle

Emergency / medical goods

- Adhesive plasters
- Bandages
- Antiseptic solution
- Ointment
- Cold medicine
- Anti-inflammatory plaster/poultice
- Digestive medicine
- Drugs for chronic diseases

Emergency food

- Drinking water
- Canned food
- Cooked packaged rice
- Crackers/hard biscuits
- Pre-packaged food

Valuables

- Cash (including small change)
- Bank passbook
- Seal
- House / car keys
- Various cards
- Mobile phone
- Driver's license / copy of health insurance card

Others (as needed)

- Extra clothes
- Towels
- Spare glasses
- Plastic wrap
- Wet wipes
- Plastic bags
- Rain gear
- Prescription record
- Mother and child health handbook
- Infant formula
- Baby bottle
- Disposable diapers
- Sanitary items
- Lighter
- Work gloves
- Face mask
- Pocket warmers
- Writing materials
- Address book with contact information
- Whistle
- Spare battery for mobile phones
- Disaster prevention hood

Emergency food

- Drinking water (three liters per person per day)
- Cooked packaged rice
- Crackers/hard biscuits
- Canned food
- Seasoning
- Pre-packaged food
- Confectionery like chocolate

Emergency food

- Drinking water (three liters per person per day)
- Cooked packaged rice
- Crackers/hard biscuits
- Canned food
- Seasoning
- Pre-packaged food
- Confectionery like chocolate

Clothing

- Extra clothes and socks
- Hat
- Extra underwear
- Blankets
- Face mask

It is recommended to store three liters of water per person per day!

To protect your life from landslide disasters



Tips for evacuation from landslide disasters

Evacuate early, paying attention to rain and warning signs

Landslide disasters are a phenomenon in which it is extremely difficult to issue evacuation information. Take the opportunity to evacuate voluntarily even if there is no information.

When it is dangerous to go out due to heavy rain

If you think that it is dangerous to go to an evacuation shelter, move to a safe place such as the second floor or higher of a sturdy building, which is away from slopes, and protect yourself without forcing yourself to evacuate to a shelter.

Be aware of the following when evacuating from a landslide disaster:

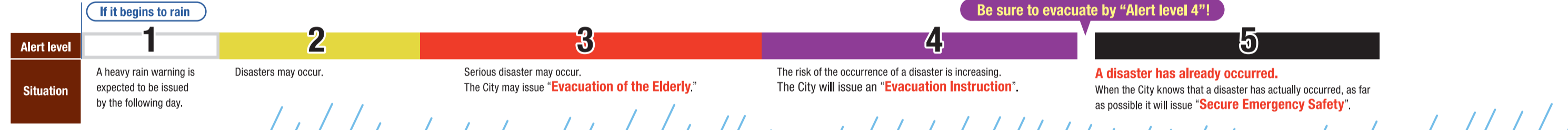
If it is expected to continue raining during the night, evacuate before it gets dark.



Choose a road away from slopes and flooded rivers.



If you feel any danger around you, run into a tall and sturdy building.



Pay attention to landslide disaster warning information!

Landslide disaster warning information

When the risk of landslide disasters increases, Gifu Prefecture and the Japan Meteorological Agency will announce the precipitation amount in the area.

NHK data broadcasting: Press the button on your remote control.

Gifu landslide disaster information portal: <https://alert.sabo.pref.gifu.jp/web/pub>

Be careful when raining!

Be careful when the rainfall is 20 mm or more per hour, or 100 mm or more after the start of rainfall.

Hourly precipitation 20 mm: Heavy rain that makes it difficult to see in front of you even if you use the wipers on your car.

Continuous precipitation 100 mm: Even if it just rains lightly, when it continues to rain for a long time the risk of landslide disasters increases.

Advance phenomena of debris flow

The mountain is rumbling or shaking.

It's raining but the river is running low.

The river is muddy and carrying trees with it.

Landslide phenomena

- Pebbles fall from the cliff.
- Spring water from a cliff increases or becomes muddy.
- Spring water stops and there are cracks on the slope.

What is a landslide disaster warning area?

Landslide disaster warning area (Yellow zone)

An area where it is recognized that there is a risk of damage to lives in the event of a landslide disaster.

Landslide disaster special warning area (Red Zone)

Areas in the landslide disaster warning area that may cause damage to buildings and cause significant harm to residents.

Consider your clothes when evacuating!

Safe and easy-to-move clothes

- Helmet (disaster prevention hood)
- Work gloves and long pants
- Backpack
- Wear long-sleeved shirts and long pants
- Comfortable shoes
- Raincoats and warm clothing against rain and wind

Arrangements and preparations for one week

Day 1-2: Utilize ingredients from refrigerators and freezers. Store ingredients in your refrigerator and store rice, bread, vegetables, frozen foods, etc. in your freezer.

Day 3-7: Rolling stock method. Rather than stockpiling specially, purchase a little more of what you would usually eat or use, and stockpile (rolling stock) on a daily basis while replenishing only what you eat or use. By doing so, you be prepared without difficulty and without waste due to expiration dates.

Other things that should be stockpiled: Canned food (vegetables, fruits, etc.), Dried noodles (ramen and pasta), Freeze-dried food (soup, etc.).

It is safer to prepare emergency food with enough for one week using the rolling stock method, etc.

***Prepare drinking and domestic water for one week. Drinking water: three liters per person per day x number of your family members.**

If you find a warning sign

Evacuation rules should be decided by everyone in your district. → Evacuation destination, evacuation timing, how to convey information, etc.

If you notice any signs that would give a reason for evacuation, share them with everyone.

Call out around the neighborhood and evacuate with neighbors.

How to get information

Kani City email distribution service: Register for the Kani City mail distribution service "Instant Email Kani".

Emergency information transmission system utilizing FMARA: Emergency information audio from radio communications for disaster prevention and administration will be broadcast using FMARA. With this system, you can listen to disaster emergency information in real time on FM radios and smartphones (requires registration of FM+!).

Registration of "FM+": You can install using the QR code on the right.

Check on TV: On TVs that support data broadcasting, you can check rain and river information by pressing the button on your remote control.

CTK Cable TV Kani: On channel 11, you can watch live images from information cameras installed in Kani City and Mitake Town, and in the event of a typhoon or heavy rain, the water level of the Kani River and precipitation data in the area will also be broadcast.

Check on the radio: This can be used to contact family members and acquaintances when it becomes difficult to connect by phone in the event of a disaster.

Disaster Emergency Message Dial 171 (NTT): <https://www.ntt-west.co.jp/dengon/>

Disaster Emergency Message Board (web171) (NTT): <https://www.ntt-west.co.jp/dengon/web171/>

You are the one who can decide to evacuate or take action.

Protect lives: Know about local disasters

- Use hazard maps to identify dangerous areas such as floods and landslides.

Protect lives: What you can do now to save lives

- Check evacuation destination
- Check how to obtain information

Escape with everyone in your area, save yourselves with everyone

Help each other: Get to know everyone in your area

- Talk to neighbors on a regular basis
- Confirm those who need evacuation assistance
- Consultation on evacuation methods

Help each other: Call out and evacuate together

- Call out when evacuating

Even if the danger of a disaster is imminent, it is difficult to decide to evacuate alone. In addition, there will be some people in your area who have difficulty evacuating on their own. Let's confirm evacuation and mutual help not only for yourself but also for everyone in your area.